

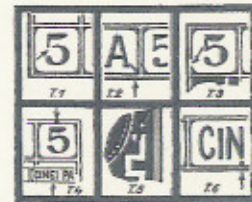
CAROL I
FIRST ISSUE – 1866-1867

The installation of Karl von Hohenzollern-Sigmaringen, best known as Carol I on the throne of the United Principalities, the 10-th of May, 1866, led to the issue of stamps with his effigy. The postal rate introduced on 1/13 January 1865 by his predecessor, Prince Alexandru Ioan Cuza, was maintained : 2 Parale for the printed matter and newspapers – 15 grams; 5 Parale for local letters – 15 grams; 20 Parale for inland letters – 15 grams. An additional fee of 20 Parale was perceived for Registered letters as well as for Retour Receptise.

The three stamps of this first issue, known also as “Carol I with sideboards”, were lithographed by Litho Sander & Co, Bucharest, with black print on colored, thick and thin paper without watermark, yellow for 2 Parale, blue for 5 Parale and rose/carmine red for 20 Parale. The transfer block contained 6 stamps. The printed sheet, imperforated, in the MD I arrangement, consists of 200 stamps, resulting from 12 horizontal rows of 17 stamps each, with 4 blank spaces in the upper right-hand corner (30 complete transfer blocks of 6 and 20 additional stamp positions in an irregular arrangement on the right-hand edge, which form the so-called “annex”).

The stamps on thick paper were on sale at July, 27-th / August, 8-th, 1866 while those on thin paper were issued in December, 1866 / January, 1867. The 1866-1867 issue could be used only in Romania. It was demonetized on 31 December 1867, with the currency conversion (to the decimal system) with Lei and Bani instead of Lei and Parale.

The transfer types of the
1866 – 1867 issue *



* - F. Heimbüchler, Romania
vol. 2, München 2002

The 20 Parale appears in two different basic types in the sheet :
Type I : The right-hand meander (Greek border) starts under the 2 of 20. Stamps of type I are number 2 and 4 from the block report.
Type II : The right meander starts below the 0 of 20. Stamps of type II are number 1, 3, 5 and 6 from the block report.



20 Parale - type I



20 Parale - type II

The Exhibit Plan

Page 2-6 : The value of 2 Parale
Page 7-9 : The value of 5 Parale
Page 10-16 : The value of 20 Parale

Essay



Type 3, on violaceous thick paper
Error: PARACE instead of PARALE

Thick paper, right-hand edge
of the sheet. The two last columns
are from the annex.

Transfer types:

4	5	6	4	5
1	2	3	3	3
4	5	6	6	6

Annex



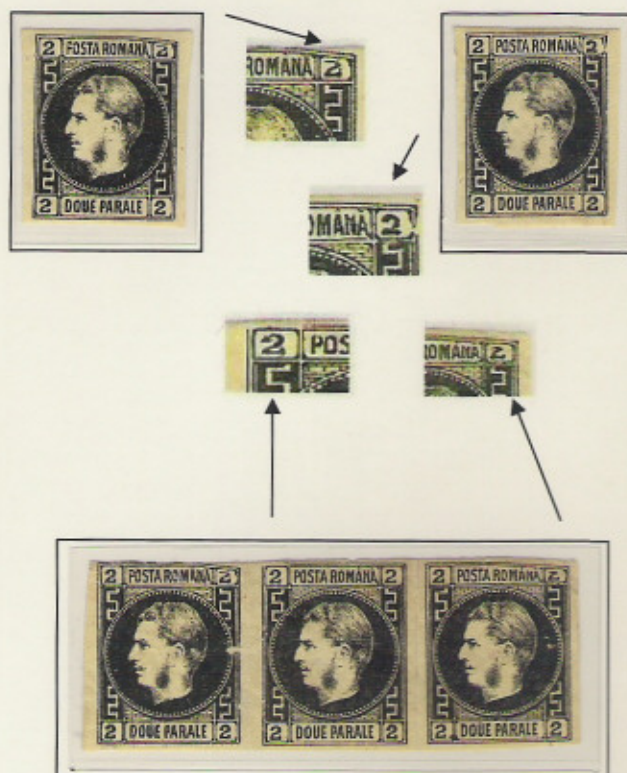
Thick paper. Upper right-hand corner of the
sheet, printing stone A.

Arrangement of the transfer types
(number of the stamp in the sheet/transfer type):

15/3	-	X	-	X
30/6	-	X	-	X
45/3	-	46/1	-	47/2

stamp 101, type 3

stamp 70, type 3



Thin paper. Stone C. Stamps positions:
101/3 - 102/1 - 103/2. Dramatic defective
transfers ("crushed" transfers varieties).
Lumens at stamps 101 and 103.



Thin paper, type 2. Cancelled with postmark type GR-1, ordinary trellis. On printed matter to the Dean of the Law Faculty, in Bucharest ("D-ssle Decanu la Dreptu - Bucuresci)

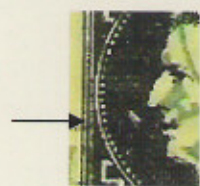


Plate scratch on type 2.



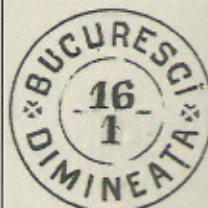
Thin paper. Types 1 - 2/4 - 5. Postmark in blue, type A-65, Turnu Magurelle (31/10).



Thick paper. Types 2/5. Rare M-1 Galatz-Moldova datestamp (18/5)



Thin paper. Types 2 - 3. Cancelled with unusual usage of "Bucarest" Austrian Post Office datestamp (7/6)



Thin paper. Types 5 - 6 - 4. T-67 datestamp "Bucuresci-Dimineata" - type 2 (16/1). All 3 stamps retouched "au pinceau" in the medallion.

The Big Lumen

1,4 mm diam., at the first vertical of the upper right meander. Stamp 37, type 1. Thin paper.



Arrangement:
36/3 - 37/1
53/6 - 57/4



Arrangement:

37/1 - 38/2 - 39/3 - 40/1 - 41/2
54/4 - 55/5 - 56/6 - 57/4 - 58/5
71/1 - 72/2 - 73/3 - 74/1 - 75/2
88/4 - 89/5 - 90/6 - 91/4 - 92/5

Grave accent in the bottom right meander

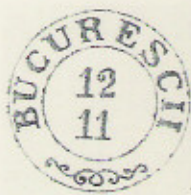


Thin paper, 2/2 // 5/17.
Turnu Magurele, S-62, red
ink postmark. Scratches on
the back of the head and at
35°.

Thin paper. Upper left corner of the sheet. Arrangement:

1/1 - 2/2 - 3/3 - 4/1 - 5/2
16/4 - 17/5 - 18/6 - 19/4 - 20/5

"Cercles de piquage" between stamps n° 3 and n° 18 and under stamp n° 16



Printed matter sent "Loco" ("in town"), at Bucharest, to "Messrs. A.H. Elias freres".
Stamp of type 6, thin paper, black postmark A-62, type II, BUCURESCII (12/11)

Thin paper. Right margin of the MdAy sheet. Arrangement:

45/3 - 46/1 - 47/2
62/6 - 63/4 - 64/5
79/3 - 80/1 - 81/2

Annex

Stamp 62/6: Black globe at the top of the head.
Lumen next to the pearls at 44



Thin paper, type 6/3, T-67 postmark, "BUCURESCII DUP' AMIADI" (18/11)



Thin paper, type 6-4, A-65 postmark, IASSI, type II (9/8)



Thin paper, upper right corner of the sheet MdBy, including 4 blank spaces. "Cercles de piquage" between stamps 13 - 14 and 14 - 15. Arrangement:

12/3 - 13/1 - 14/2 - 15/3 - X - X
 27/6 - 28/4 - 29/5 - 30/6 - X - X
 42/3 - 43/1 - 44/2 - 45/3 - 46/1 - 47/2
 59/6 - 60/4 - 61/5 - 62/6 - 63/4 - 64/5
 76/3 - 77/1 - 78/2 - 79/3 - 80/1 - 81/2



Complete report block. Thin paper, left margin, MdBy sheet. Arrangement:

65/1 - 66/2 - 67/3
 82/4 - 83/5 - 84/6

Lumen under effigy at 26', stamp 65;
 horizontal scratches on the plate, at stamps
 82 - 83



Moby - la - library

Essay



Type 4, on yellow,
medium thick paper



Reconstituted report block, light
blue, thick paper. Chopped frame,
bottom left, at stamp of type 6



Dark blue, thick paper, two complete block reports. Arrangement:

1-2-3-1-2-3

4-5-6-4-5-6

Dot at the bottom left meander, 4 small lumens in the fond of the medallion at
stamp 10. "Cercles de piquage" above stamps 1 and 2



Thick blue
paper, type 6,
blue ink
postmark
(B)UDE(U),
30/?



Light blue
thick paper,
type 2.
Small dot in
the bottom
right greek.



Blue, medium
thick paper, type
3. Chopped
external frame,
next to the first
meander, upper
right.



Blue, medium thick paper, left margin. Arrangement:

1-2-3-1-2

4-5-6-4-5

Scratches on the plate, stamp 1, first row. Brush retouched fond of medallion and dot in second C at CINCI at the first stamp on the second row.



Indigo, oily paper, types 3/6. Lumen at 17', at type 3.



Thin paper, oily indigo, type 3. Big lumen behind the head, interrupted meander and 3 missing pearls at 8' - 9'.



Thin paper, oily indigo, bottom margin.

Arrangement:

6-4-5

3-1-2

6-4-5



Blue, thin paper, types 4-5.

Black point on the cheekbone.



Blue, thin paper, type 3. Lumen in the fond of the effigy, at 45' and between neck and the pearly circle, at 23'. Irregular scratch affecting 3 pearls at 56' - 56'.



Indigo, oily paper, upper side of the sheet, arrangement 3-1-2-3-1-2-3. Lumen behind the head, at 17' (stamp 1). Lumen under the chin, stamp 2.



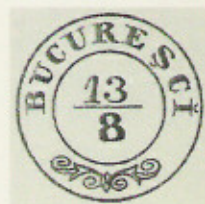
Indigo, oily paper. Integral report block.

Arrangement:

1-2-3

4-5-6

Big lumen behind the head at type 4. Dot in the upper-right meander at type 5. Big irregular lumen covering 2 pearls and disrupting circle and bottom frame at the text CINCI PARALE.



Blue, thin paper, type 6. A-65 postmark, type II BUCURESCI, 13/8



Blue, thin paper, type 6. Double A-65 (?) postmark BOTOSANI, 16/1.



Indigo, oily paper, type 2. Big lumen in front of the nose, retouched medallion



Rose, thick paper, type II/1, on complete folded letter, Mussico correspondence.
 → GIURGIU, A-65, 30/0; postmark DUPA PLECARE (After Departure), type C 8.1,
 blue ink. ← BUCURESCI, A-62, (2/10), type II.



Pale rose, thin paper, type II/1 → S-62, CAMPU-LUNG (6/12), green ink.
 ← T-67, BUCURESCI-DIMINEATA, (?/12), type II, black ink.



Rose, thick paper, types II/3 – II/1. A-65 IASSI type I, (19/9).



Dull rose, thick paper stamps of type I/2 on front and II/1 on back of the registered cover n° 1728 , cancelled twice with GR-1 black grill obliterator. Framed C-7 RECOMANDAT. → MIZIL (17/11), manuscript. ← T-67, BUCURESCI-DIMINEATA, type II, (19/11)



← Rose, thin paper, arrangement:

II/3 – II/1

II/6 – I/4.

Major default: tuft at the nape of the neck.

Dot in the bottom left meander of type 4.



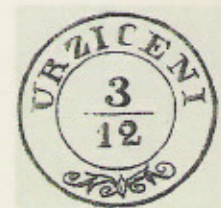
Rose, thin paper, types I/2 – II/3, I/2, II/6, tied by black GR-1 grill obliterators, on registered cover. Framed C-7 “RECOMANDAT” in greenish-blue ink. Pair 2 – 3 comes from annex of a MdCy plate.
 → MIZIL 27/3, hand written. Red wax seals applied at Mizil Post Office.



Deep rose, thick paper, type II/3 // II/6.
 A-65 BOTOSANI, 20/8



Pale rose, thin paper, types I/2 – II/3. Retouched medallion. A-65 BUCURESCI, type I



Pale rose, type I/4 stamp on folded letter. Retouched medallion.
 → A-65, URZICENI (3/12) ← T-67, BUCURESCI-DIMINEATA, type II, 5/12

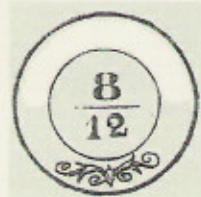
One of the two cancelled blocks of nine recorded



Rose, thin paper, used marginal block of 9.
 Transfer types: Positions in the sheet:
 II/3 – II/1 – I/2 9 – 10 – 11
 II/6 – I/4 – II/5 24 – 25 – 26
 II/3 – II/1 – I/2 39 – 40 – 41
 Apostrophe between POSTA and ROMANA,
 interrupted circle at 23', 37' and 39' and
 missing pearls at 37' – at stamp 24, type 6



Rose, thin paper, types II/6 – I/4, positions 24-25
 Apostrophe between POSTA and ROMANA at stamp 24, type 6



Unidentified A-65 (8/12)



Rose, thin paper, type II/5.
 Apostrophe between POSTA and ROMANA.
 Unusual at type 5. Dot in upper left meander.



Registered letter n° 785, with light rose, thin paper strip of 3, types II/6 - I/4 - II/5, cancelled with GR-1 simple grill, and pale rose, thin paper, type II/3 stamp, cancelled with small C-7 RECOMANDAT '65 postmark. → M-1 GALATZ-MOLDOVA (8/6).



Pale rose, thin paper, II/1 - I/2 - II/3 C-9a, FRANCO postmark, greenish blue ink.



Light rose, thin paper, I/4 - II/5 - III/6, on fragment. All stamps retouched in medallion. A-65, BUCURESCI, type I postmark (18/6)



Light rose, thin paper, II/1 - I/2 // I/4 - II/5. T-67, BUCURESCI-DUP'AMIADI postmark (7/12)

Dot in the Greek meander (Type 5 of the block report)



Rose, thin paper, II/5 // I/2, type 5 with "dot in the Greek meander". GR-1 grill obliterator, on cover. Manuscript "franco".

→ S-62 ZIMNICEA (19/3)

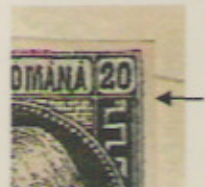
← A-62, BUCURESCII, type II (26/3), on back of cover

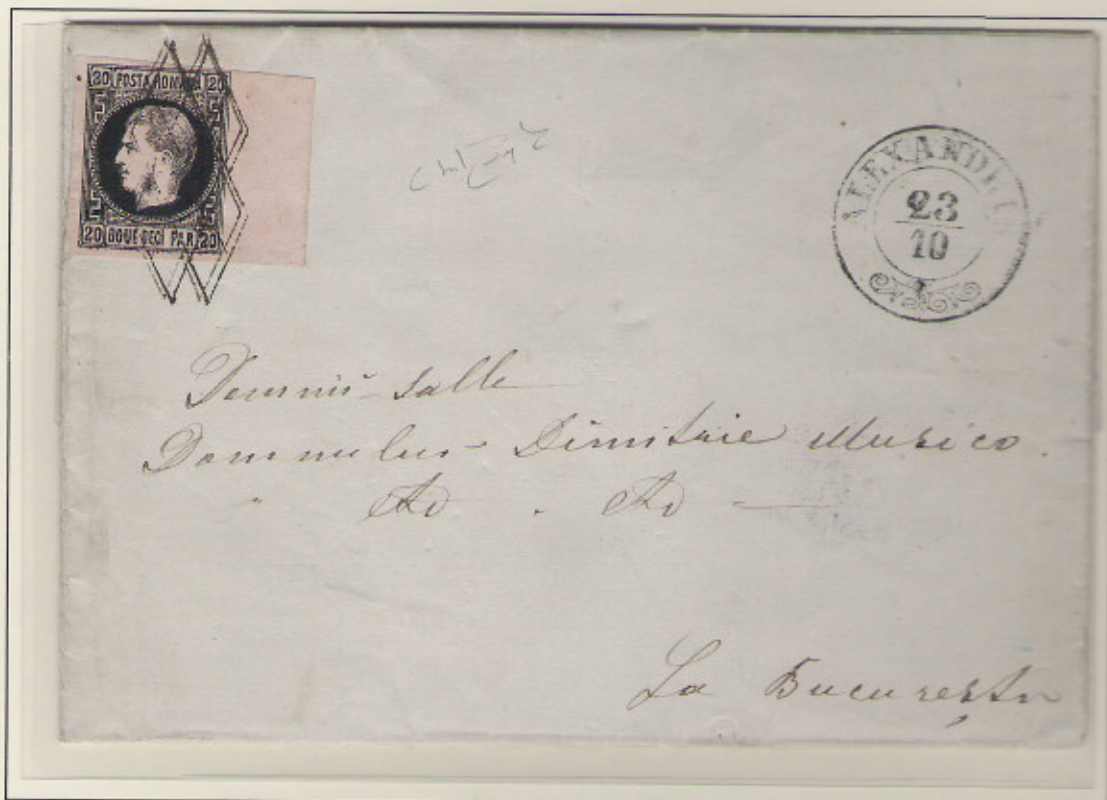


Pale rose, thin paper, II/5 // II/6, on fragment.
A-65, CRAIOVA type II (19/10).

Unusual dot in the Greek meander at type 6

Deep rose, thick paper,
II/5 // I/2, from the
annex, type 5 with dot
in meander. GR-1
postmark.





Pale rose, thin paper, type II/6, with retouched medallion, from right margin of the sheet, on entire letter, black grill GR-1 obliterator. → A-65 ALEXANDRIA (23/10). ← T-67 BUCURESCI DIMINEATA type I (25/10) on back of cover.



Types:

I/4 - II/5 - II/6 - I/4 - II/5
 II/1 - I/2 - II/3 - II/3 - II/3
 I/4 - II/5 - II/6 - II/6 - II/6

Positions in the sheet:

162 - 163 - 164 - 165 - 166
 179 - 180 - 181 - 182 - 183
 196 - 197 - 198 - 199 - 200



stamp 166

stamp 182



Stamp 182, A-65
 CRAIOVA

Rose, thin paper, lower right corner block of 15 from MdCy stone, with stamp 166 showing white flaw behind the effigy and stamp 182 showing "Moon Above Forehead" variety.